

# Ultrablue™ Smartrack™

cleared water treatment through out / in ultrafiltration modules for reuse applications

○ reuse



increase reuse plant scalability with interchangeable ultrafiltration modules

○ flexible integration

a standardized, industrialized system for easier installation

○ savings

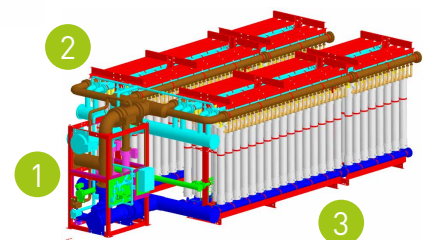
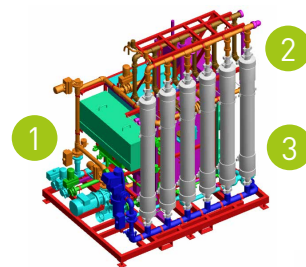
the high performance of ultrafiltration at controlled costs

## innovation

the only universal rack with interchangeable ultrafiltration modules

Each rack is made up of 3 parts :

- 1 the facade (called the "valve racks") where the valves, instrumentation and electrical connections are located
- 2 "inter-piping" or the 3 networks that connect to the rack
- 3 the "module rack" where the ultrafiltration modules are attached



## key figure

abatement up to

**6** log on  
Cryptosporidium



## Ultrablue™ Smartrack™ technology...

Ultrablue™ Smartrack™ is a rack, capable of accommodating ultrafiltration membrane modules of different brands, presenting varied dimensions as well as different connections.

Ultrablue™ Smartrack™ is adaptable to any plant size as it is able to handle a capacity of 200 to 22,000 m<sup>3</sup>/day per rack.

The Ultrablue™ Smartrack™ system functions on an out / in principle (filtration from the exterior towards the interior of the membrane) in order to treat directly settled or floated water.

## ... what it can do for you



**SUEZ treatment infrastructure**  
innovation.mailin@degremont.com  
www.degremont.com